

Scenario Game Canvas 01

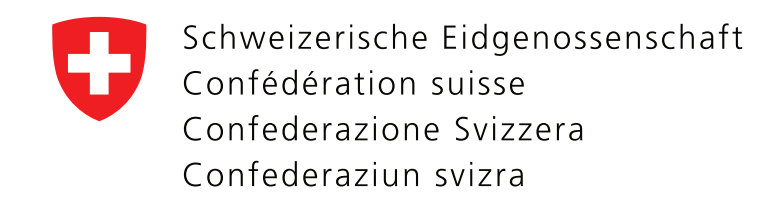
A start into strategic foresight

Team-members:

1. _____
2. _____
3. _____
4. _____
5. _____
6. _____

How to use:

- Note down the names of the team members
- Follow the directions of the path and work on the canvas by filling it with your ideas on Post-its



Before we play

1. Define the industry or focus for the game

2. Select the time horizon

- Short Term up to 5 years
- Medium Term up to 10 years
- Long Term up to 30 years

3. Choose **3 technological trends** and **3 megatrends** from the cards

Come up with your own scenario

START task 4

Define your scenario

What are the circumstances that drive this scenario?

What are hindrances and challenges to overcome?

Find a scenario title:

Find implications of the scenario and selected trends on your industry or focus

What effects does the scenario have on your industry or focus regarding:

- Products/Product lines
- Services
- Operations
- Strategy
- Risk Management

5. Now craft a concise narrative or story that summarises the scenario, your implications and eventually measures to prepare for the scenario

Got To Canvas 02

Scenario Game Canvas 02

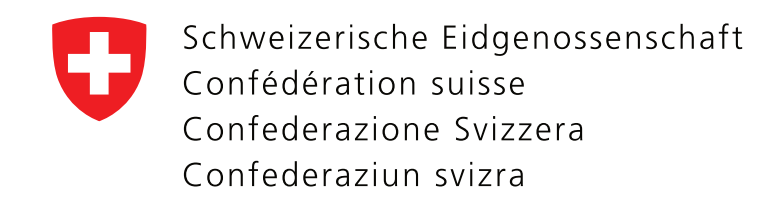
A start into strategic foresight

Team-members:

1. _____
2. _____
3. _____
4. _____
5. _____
6. _____

How to use:

- Note down the names of the team members
- Follow the directions of the path and work on the canvas by filling it with your ideas on Post-its

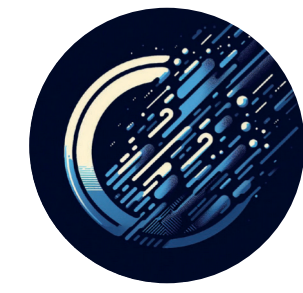


Explore the Four Archetype scenarios

6. Allocate the developed scenario from canvas 01 into one of the Four Archetype scenarios. You will not further work on that Archetype scenario.

7. Make yourself familiar with the three left Archetype scenarios and find implications of them and selected trends on your industry or focus:

START
task 7



COLLAPSE signifies a future where the system fails due to reaching its limits. To navigate this scenario, prioritise sustainable practices, manage resources wisely, and watch for warning signs of impending collapse. Act swiftly to mitigate risks and stabilise the system to prevent total breakdown.

What implications does the **CONTINUED GROWTH** scenario have on your industry or focus?

What implications does the **TRANSFORMATION** scenario have on your industry or focus?

What implications does the **DISCIPLINE** scenario have on your industry or focus?

What implications does the **COLLAPSE** scenario have on your industry or focus?



CONTINUED GROWTH depicts a future where the current trajectory persists, with both improvements and ongoing challenges. It resembles "business as usual" but involves deliberate progress. To navigate this scenario, focus on maintaining the current path while making strategic adjustments for sustainable growth. Be mindful of existing issues and work towards resolving them to ensure a balanced expansion of the present.



TRANSFORMATION envisions a future marked by a radical shift from the present, triggered by a transformative event or phenomenon - be it spiritual or technological that redefines humanity itself. To navigate this scenario, embrace innovation, adapt to new paradigms, and explore the potential of emerging technologies. Prepare for profound changes in society, culture, and individual identity, and seek opportunities for growth and adaptation amidst transformational upheaval.

8. Now craft a concise narrative or story for each of the three scenarios, summarising the scenario and implications as well as measures to prepare for the scenario



DISCIPLINE portrays a future of balance, where civilisation prioritises sustainability. To implement this scenario, focus on long-term planning, resource management, and promoting harmony between economic, environmental, and social factors. Invest in renewable resources, regulate resource use, and be vigilant against disruptions.